

**T*S*D*A
BOOT CAMP**

September 17-20, 2015

Chapel Hill, NC

**T*S*D*A
BOOT CAMP**

TSDA

Welcomes

**CLASS OF
2 0 1 5**









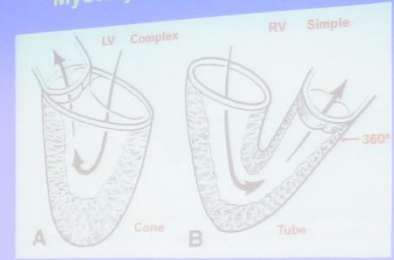
GRUPO
AUDITO

**T*S*D*A
BOOT CAMP**

**AORTIC ROOT
ANATOMY**

Sponsored by
CryoLife, Inc.

Ventricular Anatomy "Mystery" of the Aortic Root



Yacoub, et al, Ann Thorac Surg 1999



EXIT

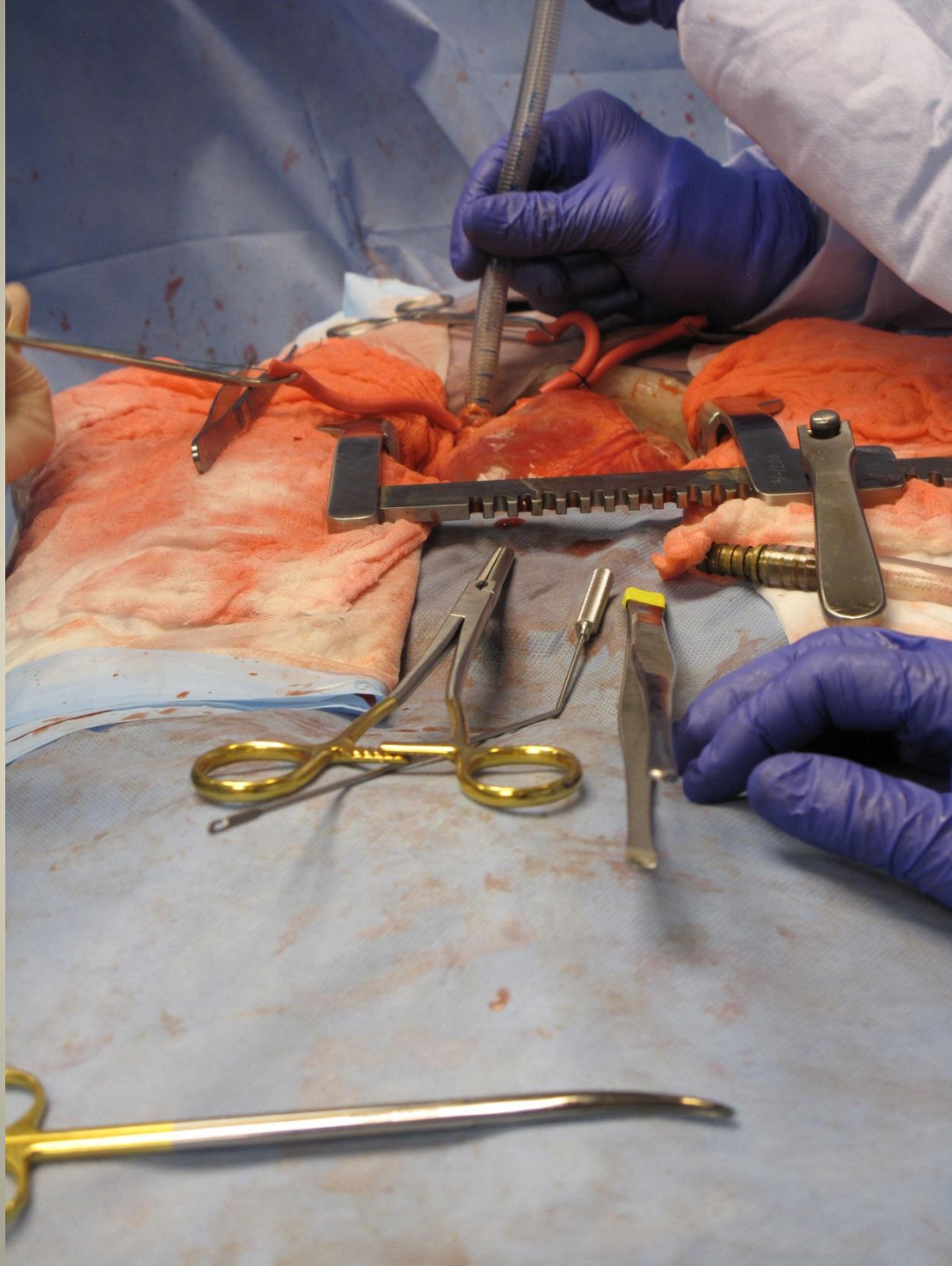


**T*S*D*A
BOOT CAMP**

CPB SKILLS











DEFAULT USER PW
1234

DR. FEINS PW
1111

09/19/2015 09:10 AM John, SeniorTourFriday #Firstby AI 05:59:44 Images: 0 IMAGE STREAM MEDICAL • LUXTEC X

Register Record Review Edit History Done Logout

Inputs Settings Tools

A

1 S-Video 2 Composite

3 S-Video 4 Composite



Recording stopped StreamA logging Richard Feins

SONY

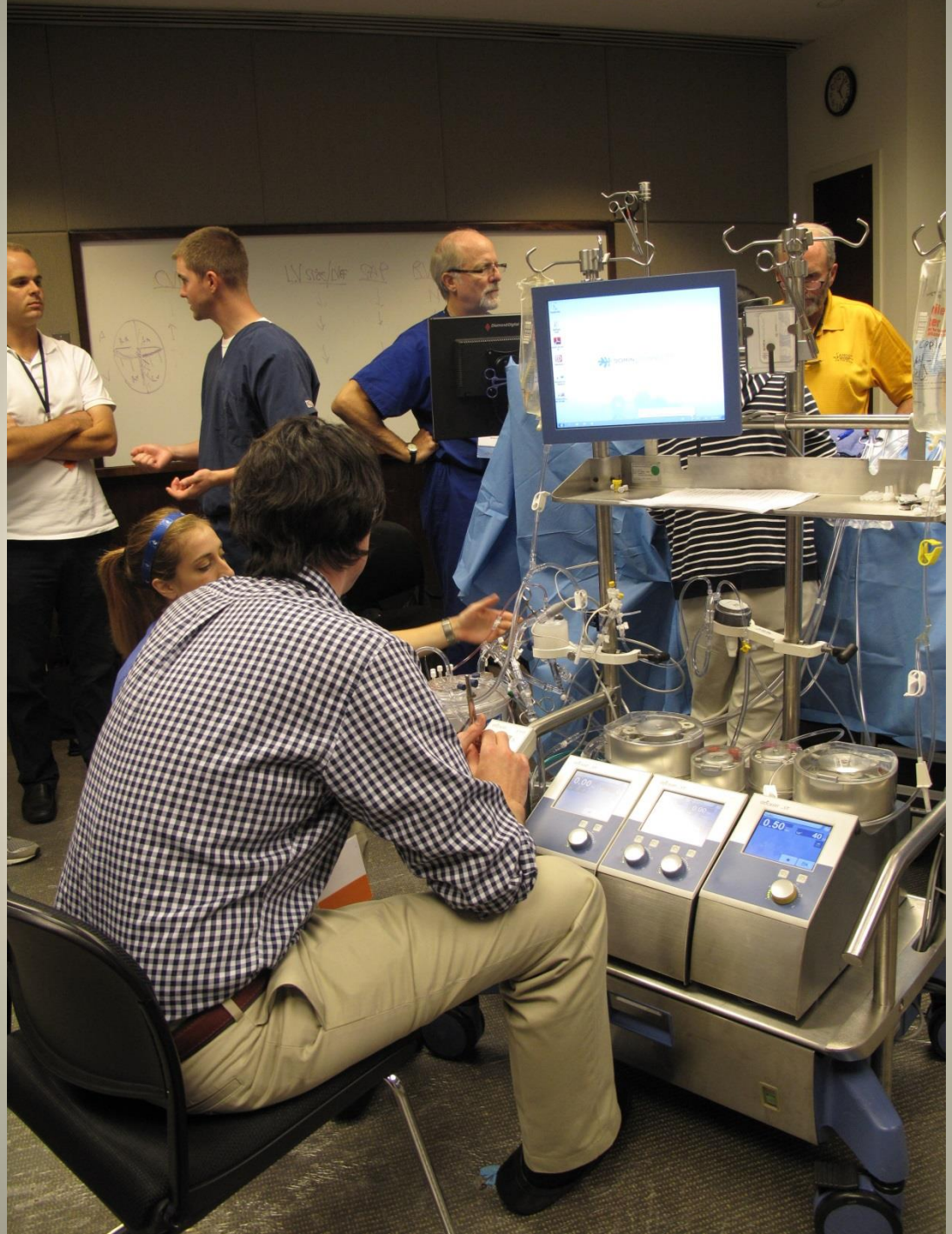
INSPECTED
Call Medical Engineering For
Service



STORZ
KARL STORZ - ENDOSCOPY

OfficeKart 9801

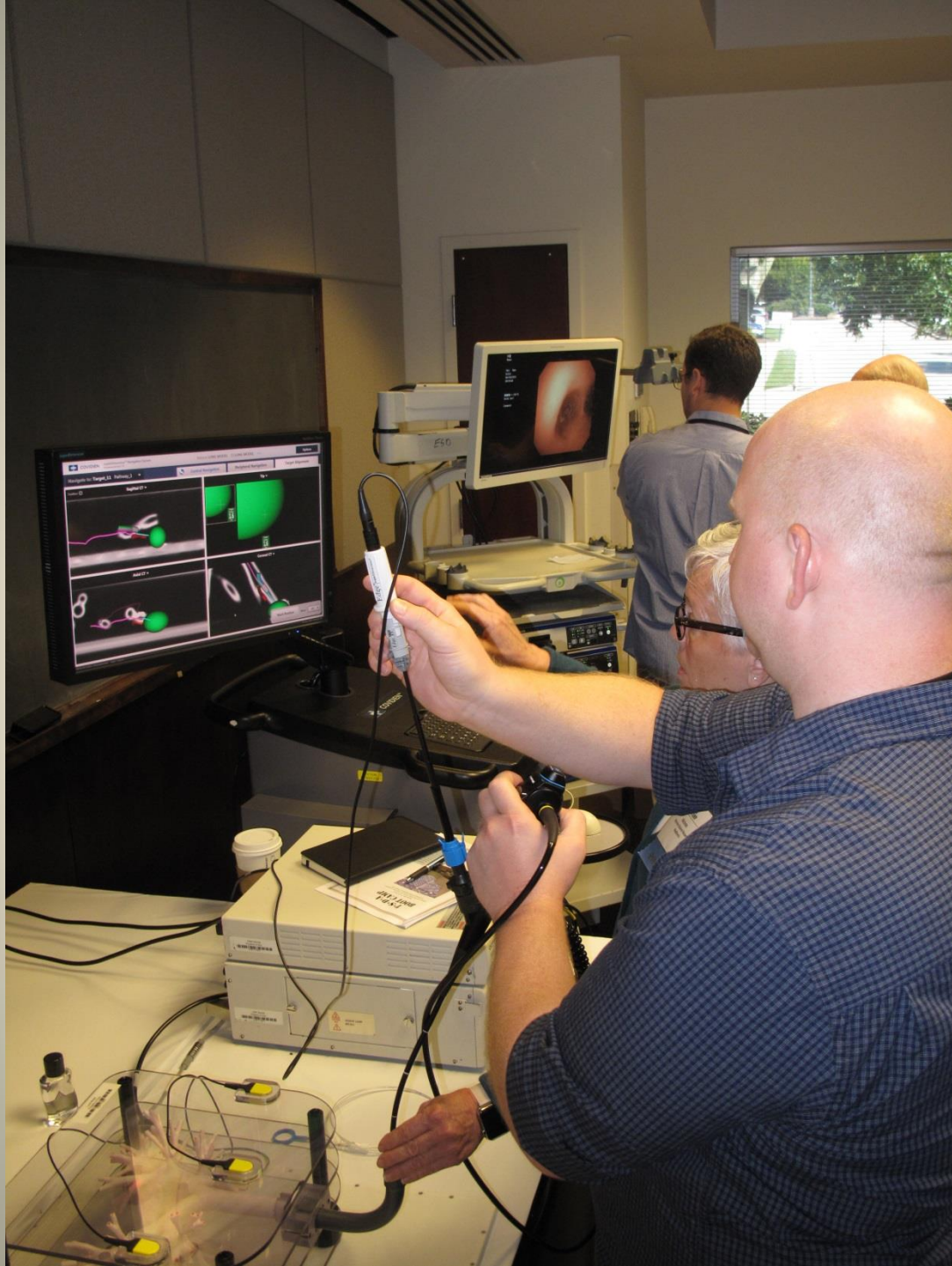






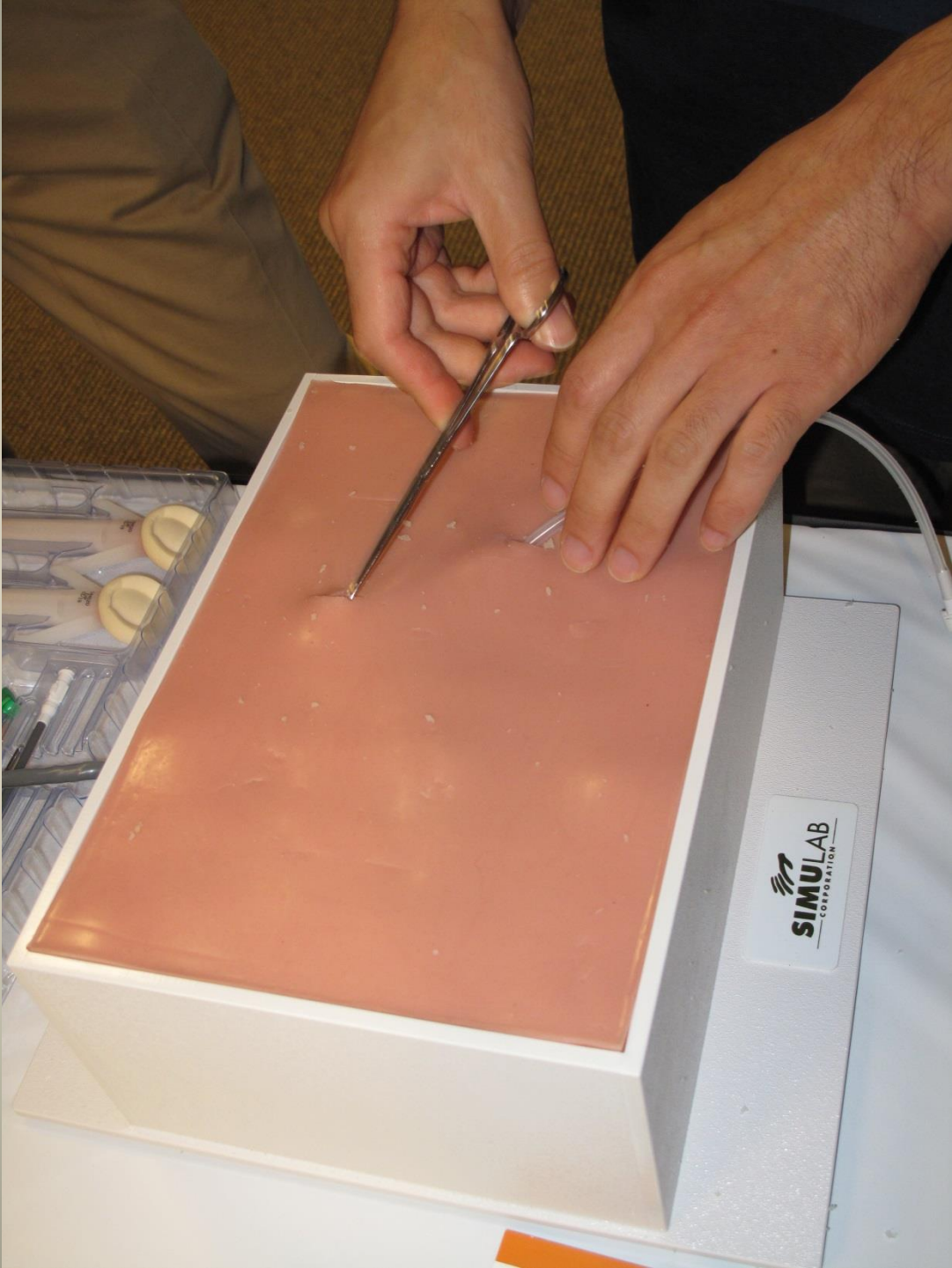
**T*S*D*A
BOOT CAMP**

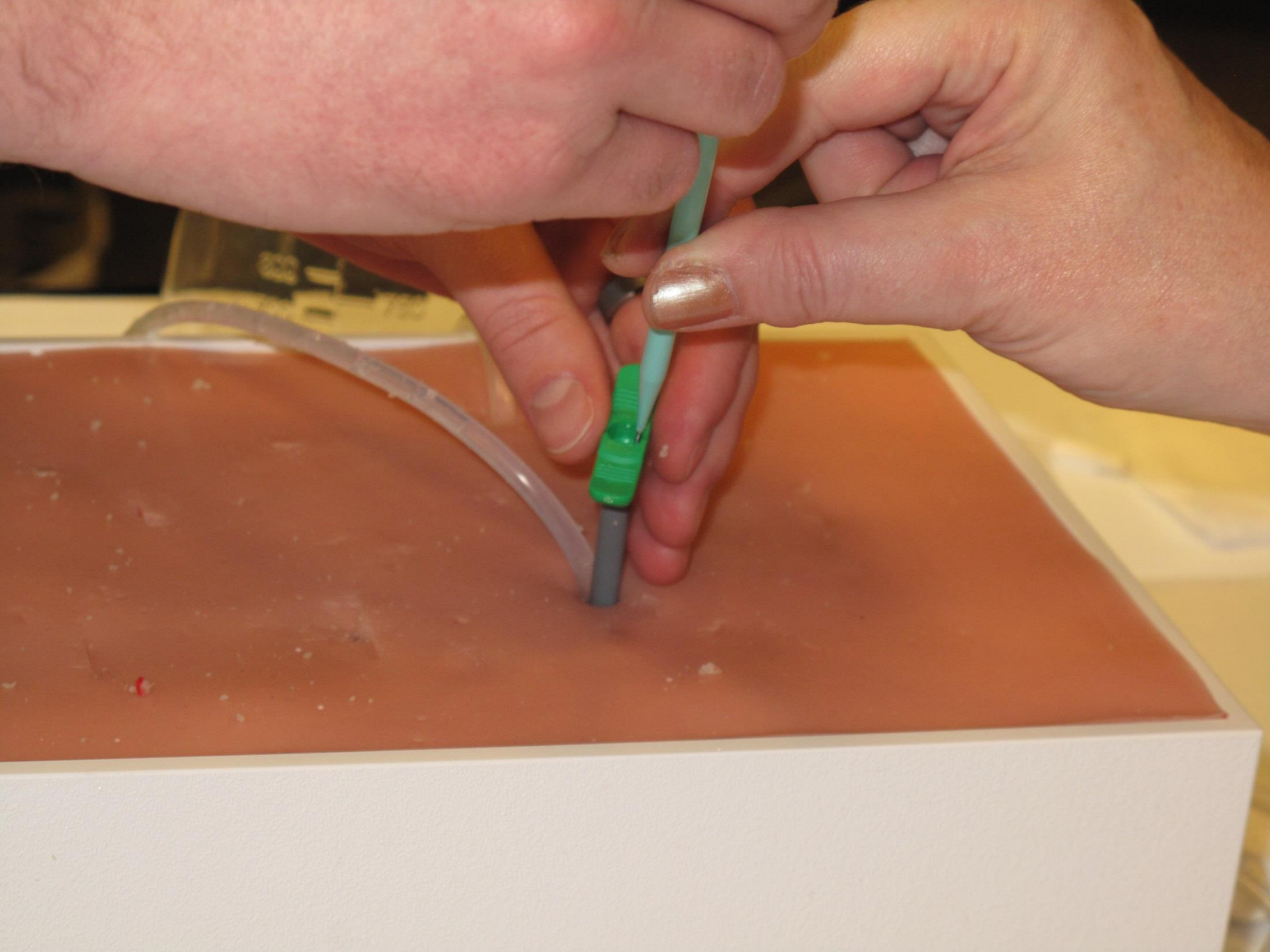
**BRONCHOSCOPY/
MEDIASTINOSCOPY**



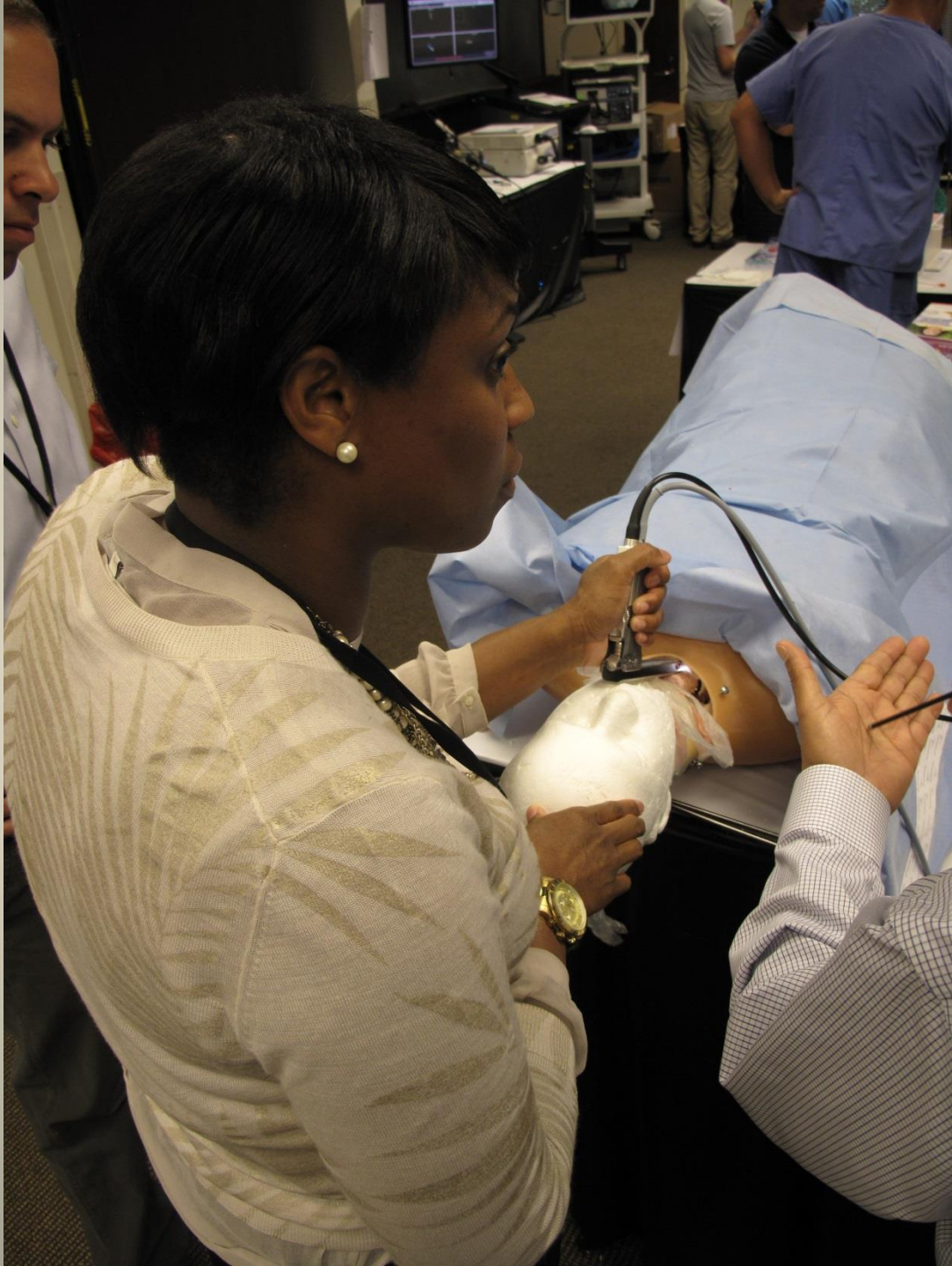


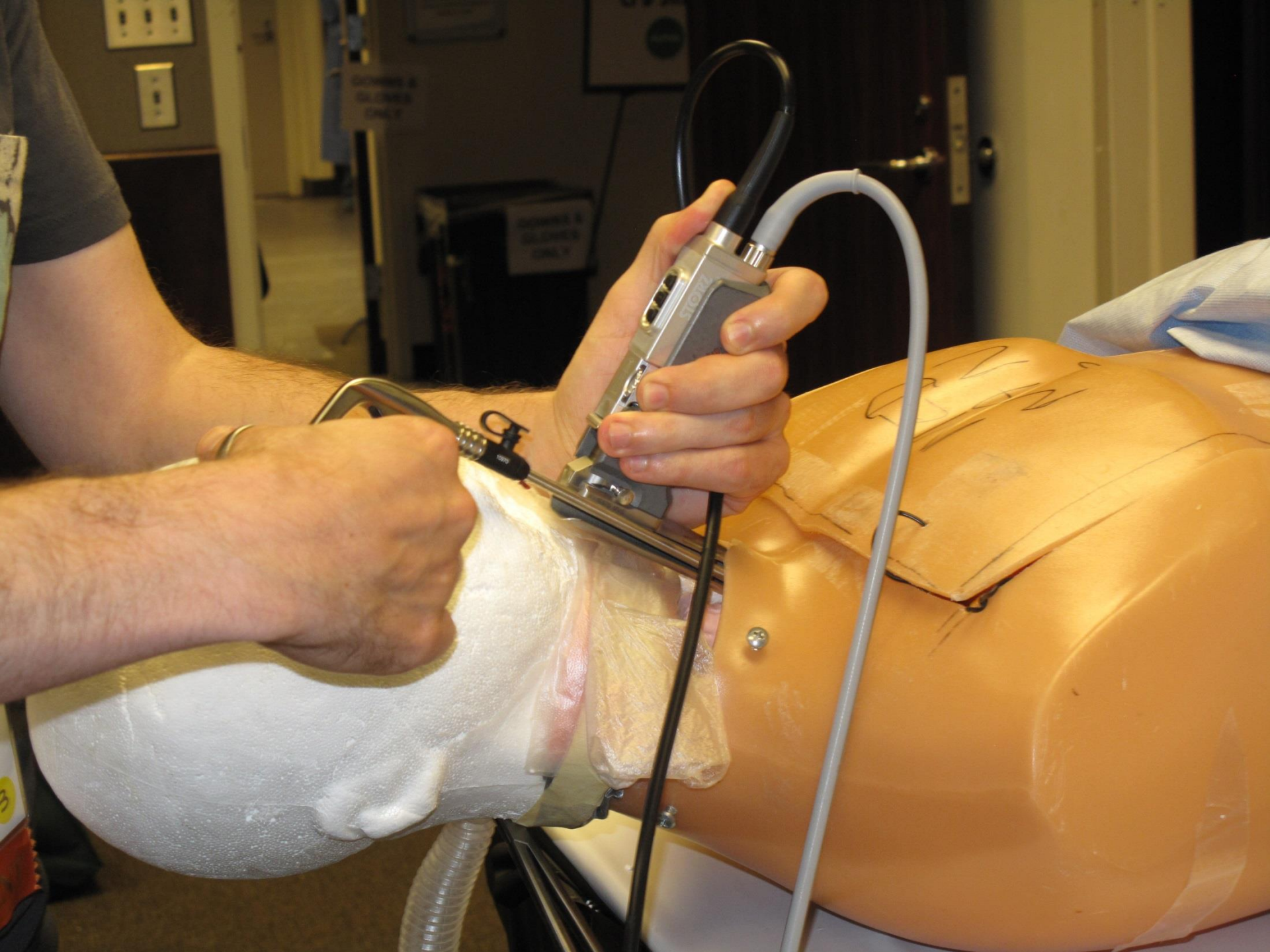


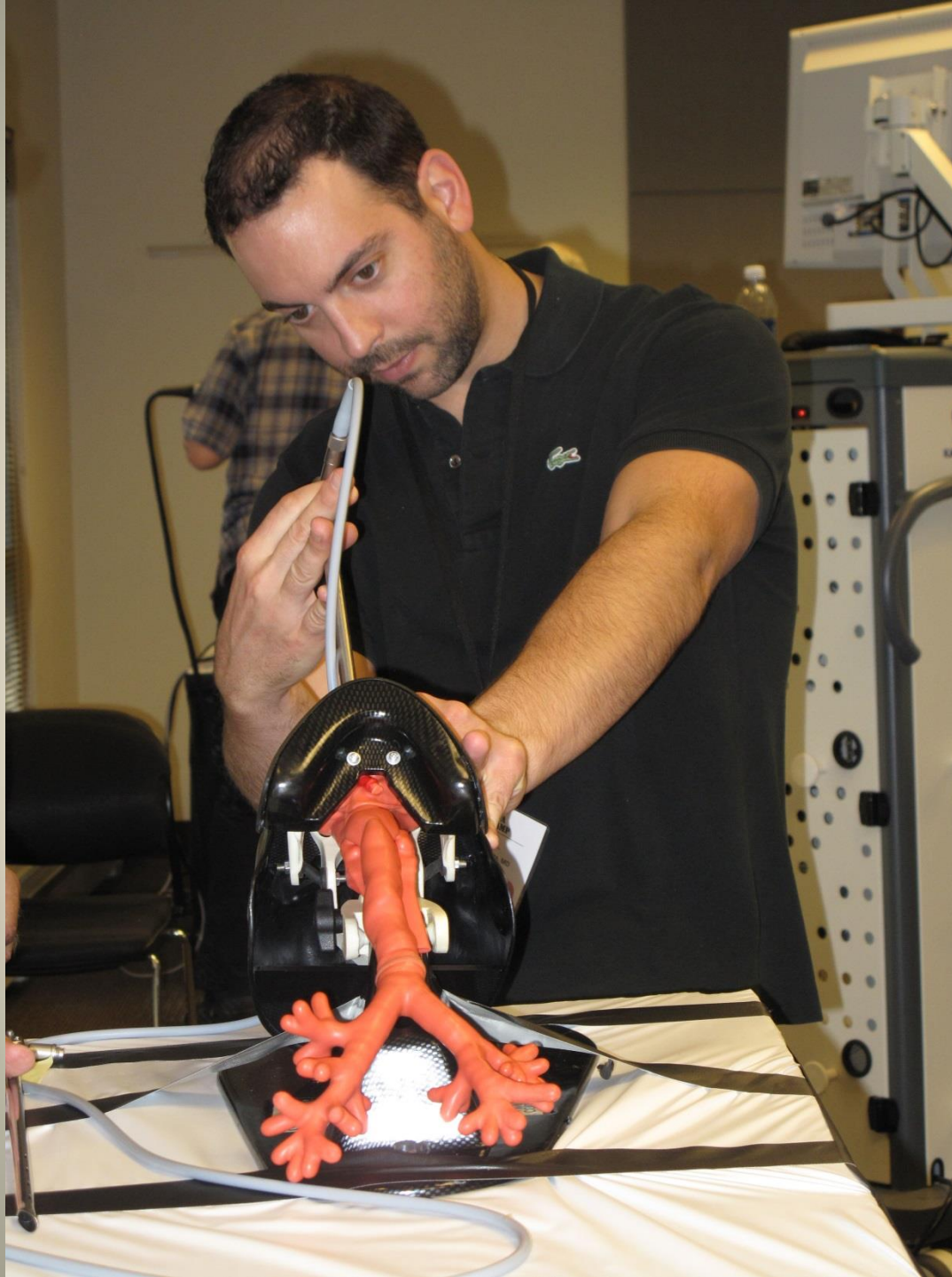














**T*S*D*A
BOOT CAMP**

**Introduction to
MITRAL VALVE
SURGERY**

Sponsored by
Medtronic, Inc.









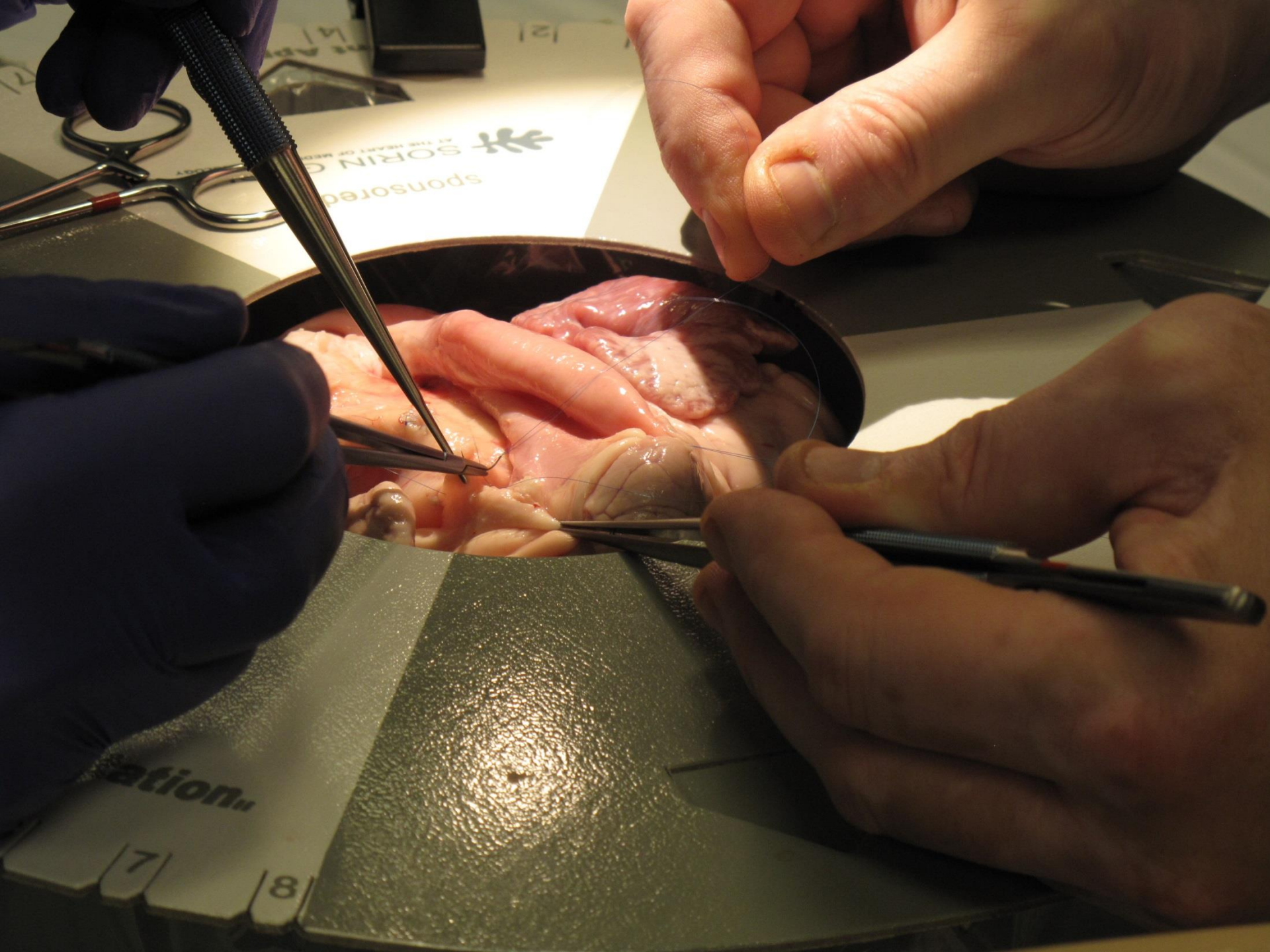




**T*S*D*A
BOOT CAMP**

**VESSEL
ANASTOMOSIS**











Disposable Wetlab Station
single use only
1
2
3
4
5
6
7





Lab Station

sponsored by
SORIN GROUP
AT THE HEART OF MEDICAL TECHNOLOGY

6 7 8
led for



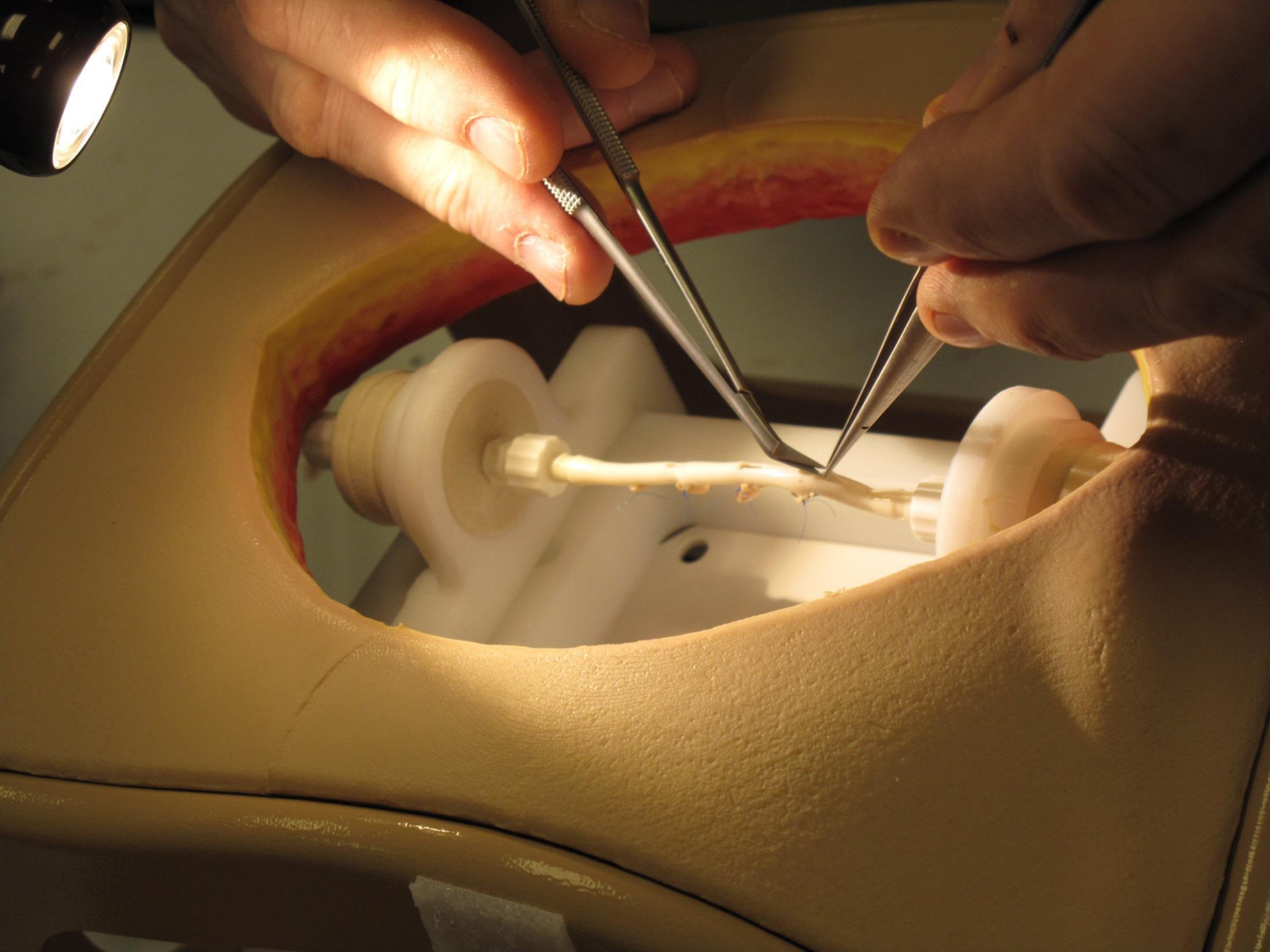
DEKOR 11 6 x 24 inches 90 mm 50
Blue Mantra Surgical Sutures

Resorbable Surgical Sutures, U.S.P.

STERILE - No Non-Resorbable

© 2008 DEKOR





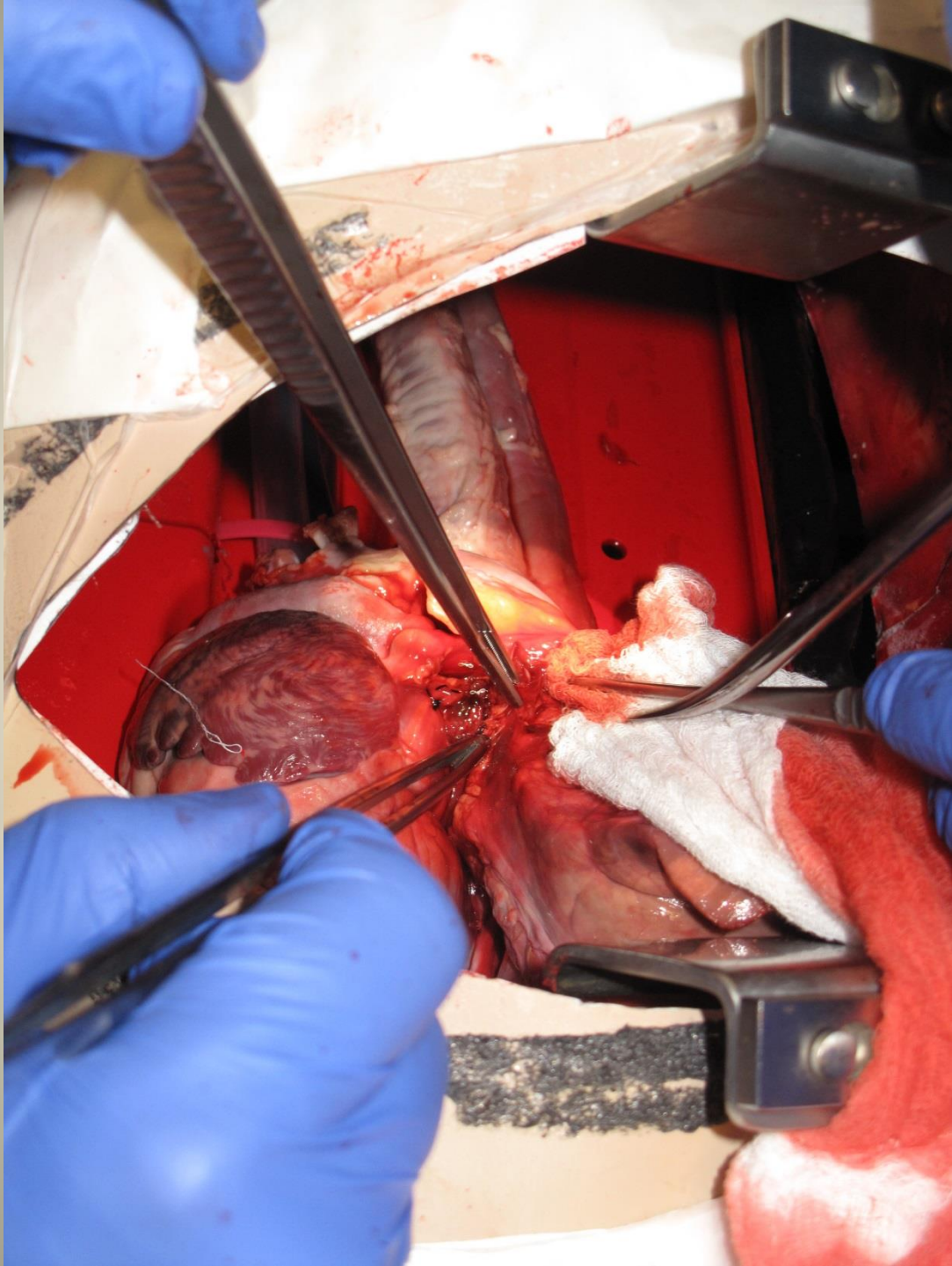




**T*S*D*A
BOOT CAMP**

**OPEN
LOBECTOMY**





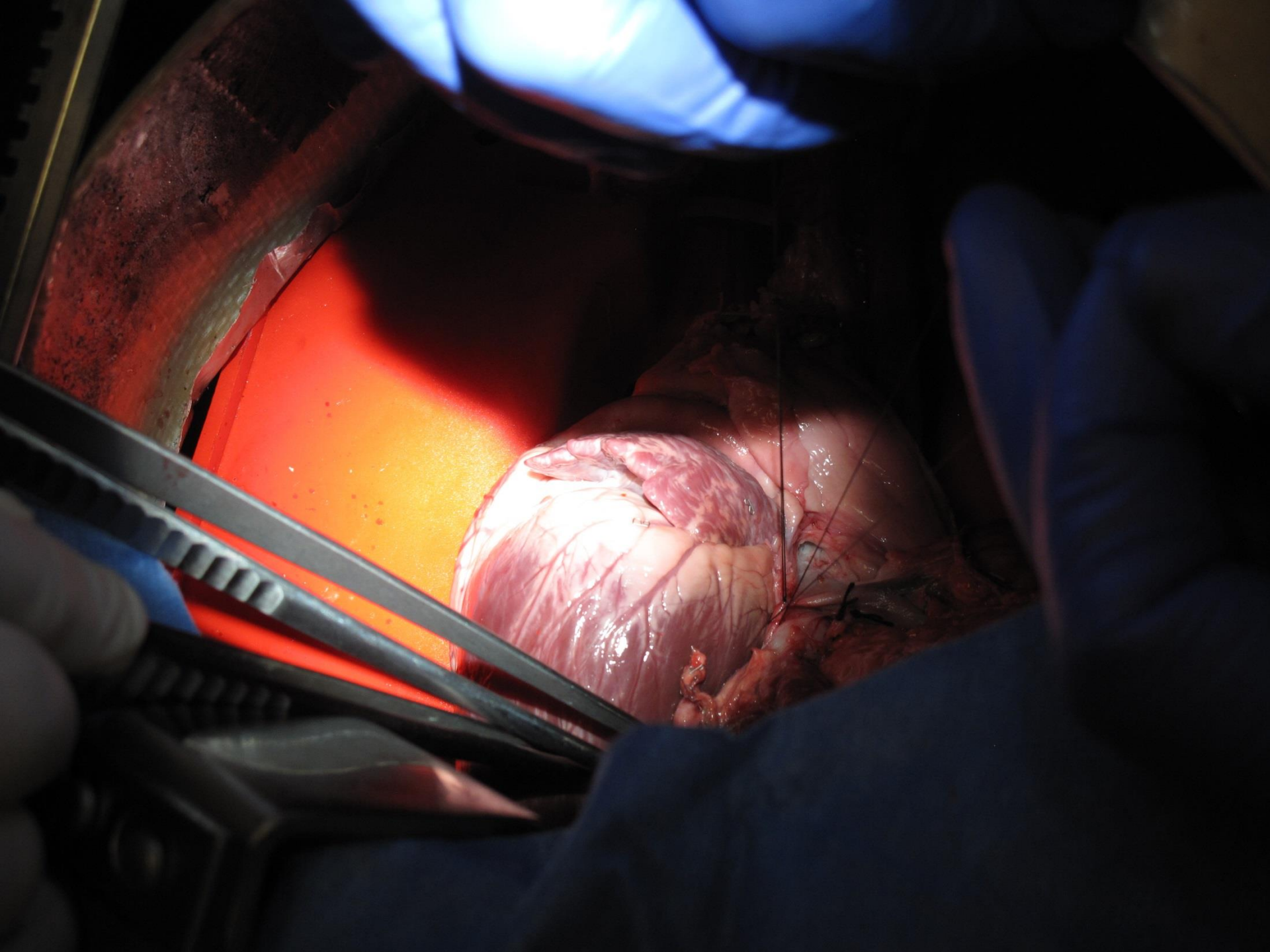


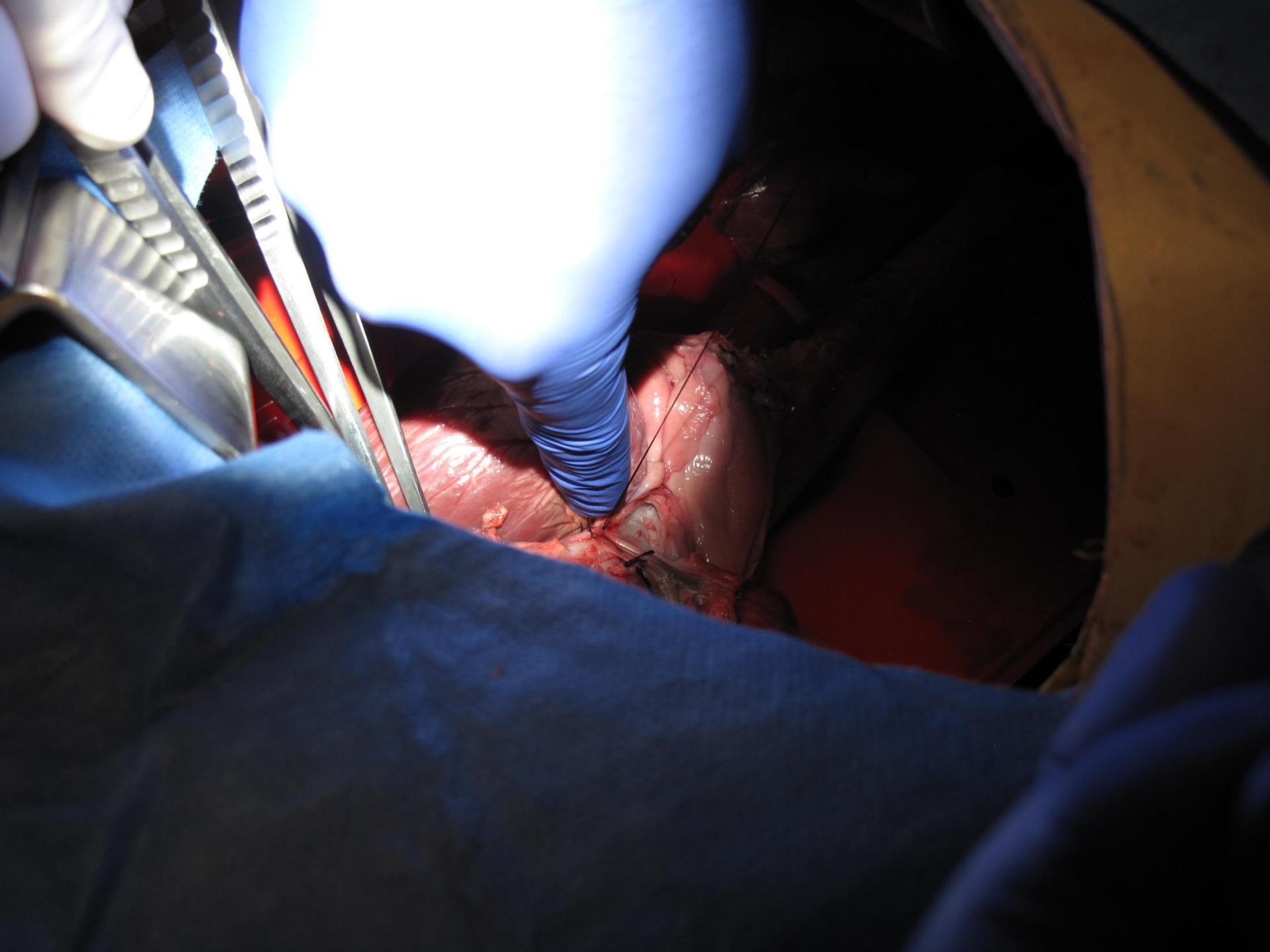
9GENERAL
STEPHEN YANG
JOHNS HOPKINS HOSPITAL

T-S-H-A
BOOT CAMP
Stephen Yang
Johns Hopkins Hospital

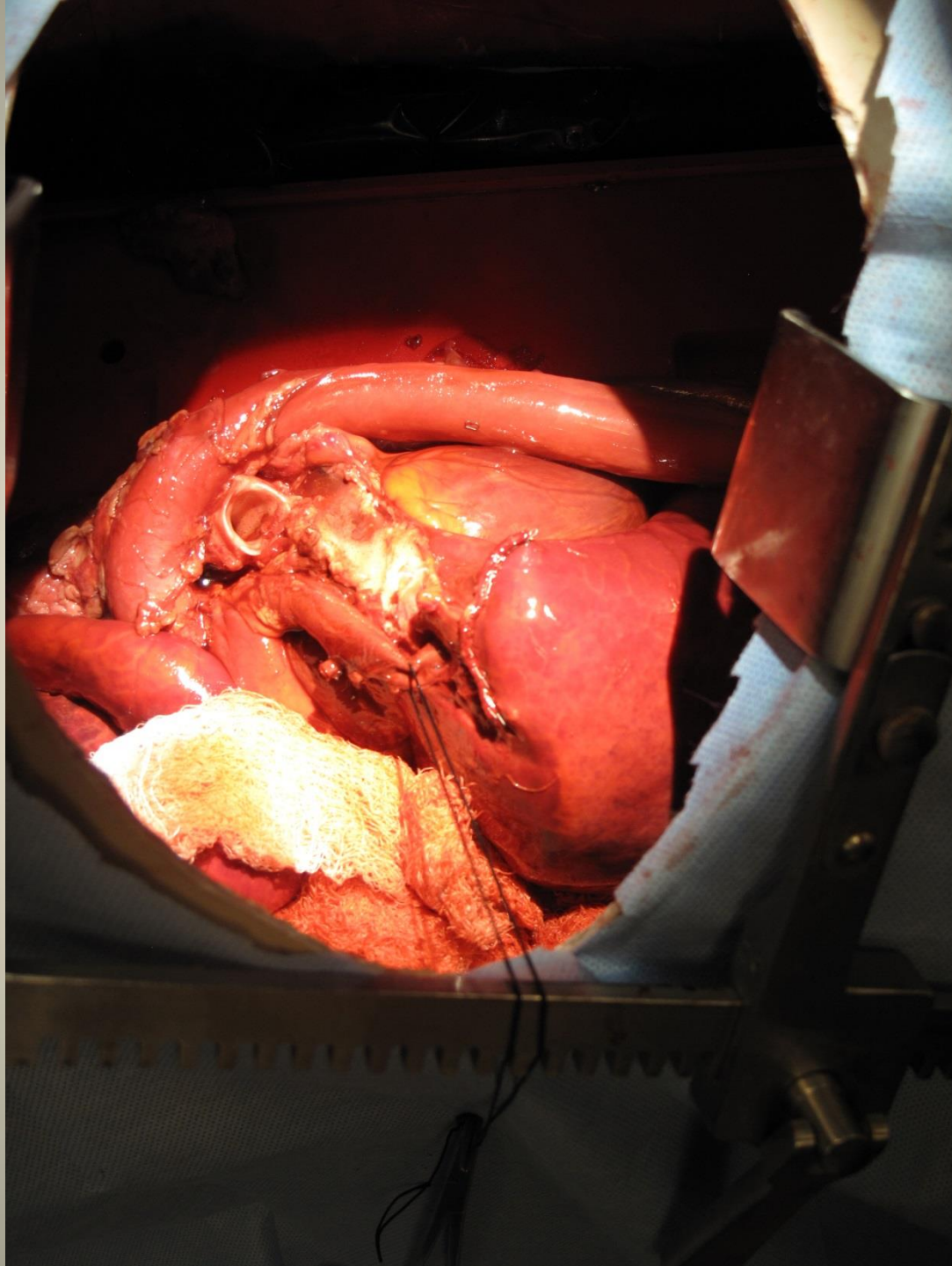
GOW
GLC
O











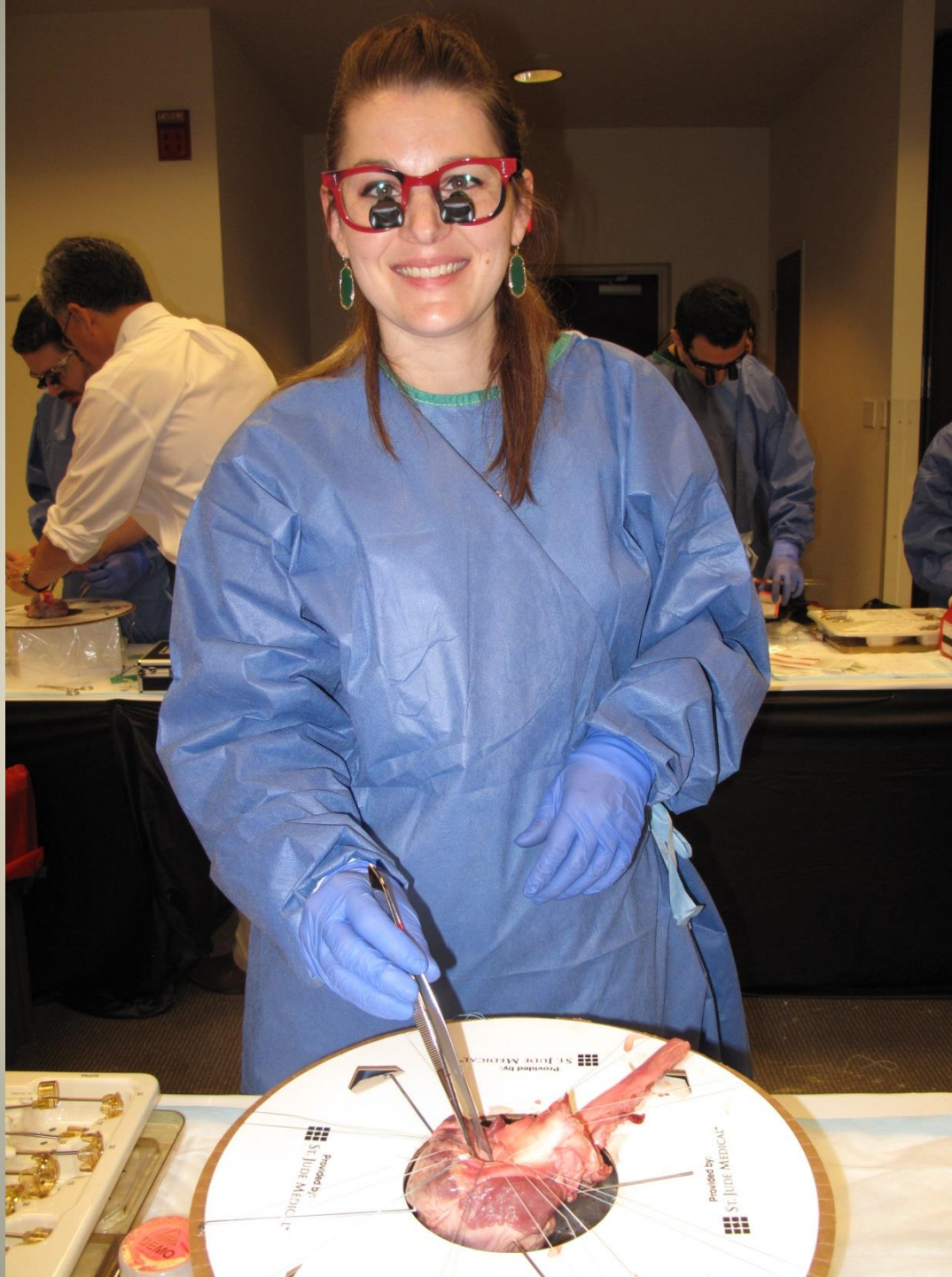
**T*S*D*A
BOOT CAMP**

**Orientation to
AORTIC VALVE
SURGERY**

Sponsored by
St. Jude Medical, Inc.

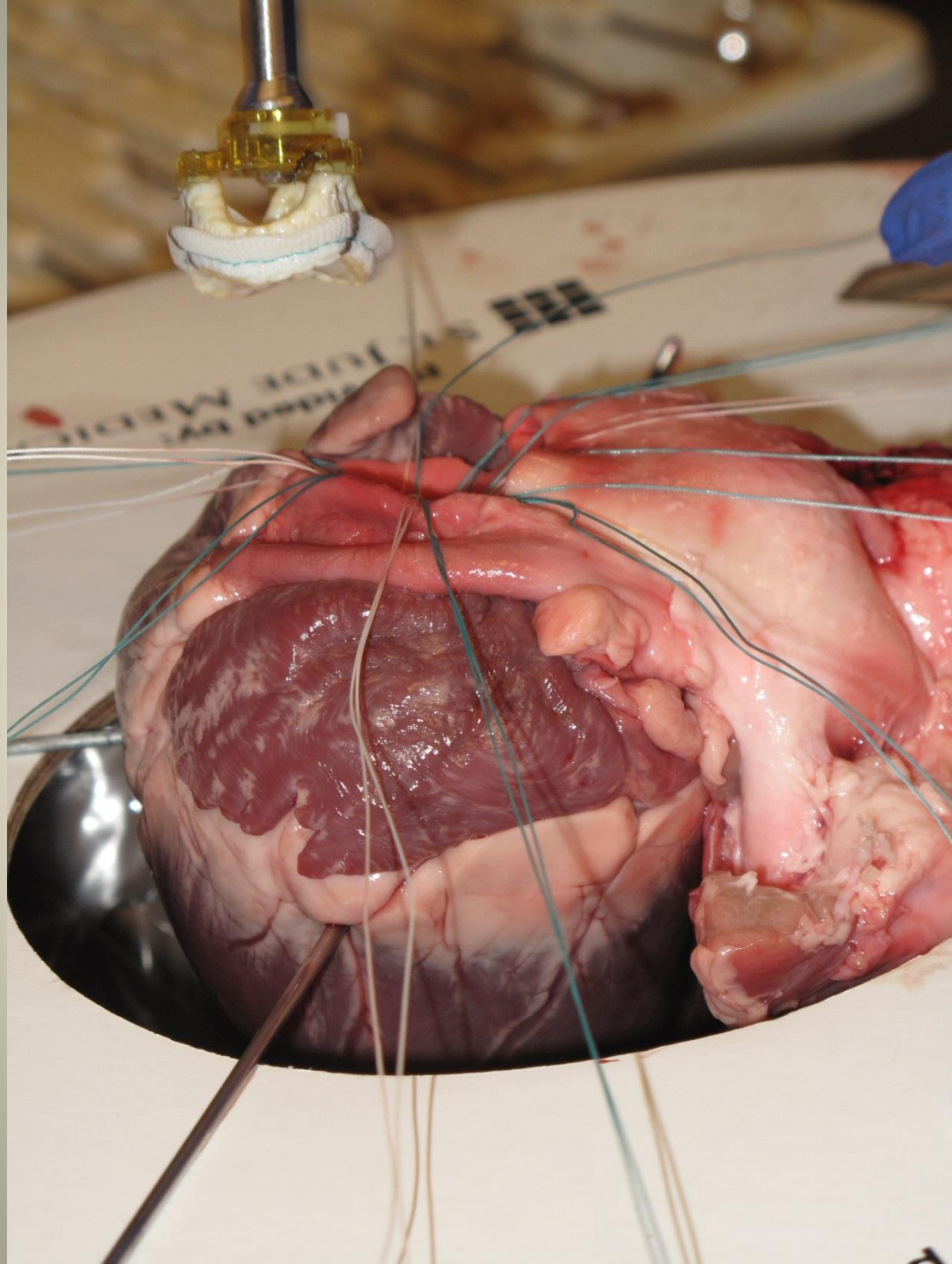






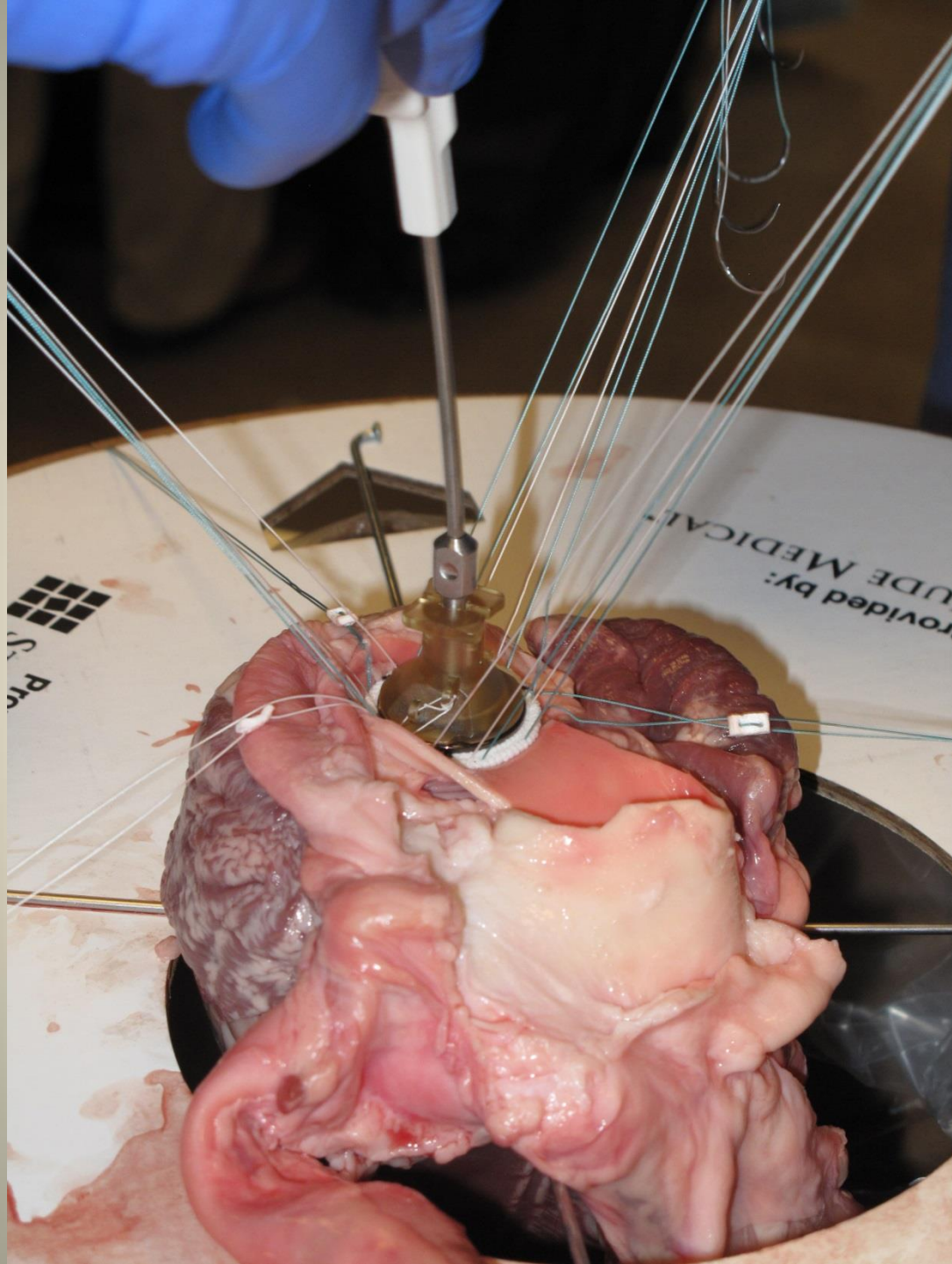
















T*S*D*A BOOT CAMP

**Special thanks to 2015 TSDA
Boot Camp Corporate Supporters**

MEDAL OF HONOR

Medtronic, Inc.

GOLD BARS

Baxter Healthcare Corp.

CareFusion

Ethicon Endo-Surgery

SILVER CLUSTER

St. Jude Medical, Inc.

Terumo Cardiovascular Systems

BRONZE STAR

Davol, Inc., A Bard Company

Edwards Lifesciences

Scanlan International, Inc.

T*S*D*A BOOT CAMP

TSDA Thanks the Following Supporters:

3si, A Downing Health Technologies Company

Baxter Healthcare Corp.

CAE Healthcare

CareFusion

The Chamberlain Group

CorMatrix Cardiovascular, Inc.

CryoLife, Inc.

Davol Inc., A Bard Company

Edwards Lifesciences

Ethicon Endo-Surgery

Inventive Medical

Karl Storz Endoscopy America, Inc.

KindHeart, Inc.

Maquet Medical Systems, Inc.

Medtronic, Inc.

Olympus Corporation of the Americas

Scanlan International, Inc.

Sorin Group

St. Jude Medical, Inc.

Teleflex

Terumo Cardiovascular Systems

The University of North Carolina,
Division of Cardiothoracic Surgery

W.L.Gore & Associates

Just received and
shown in the public records. The
records indicate the existence of
property. The fact that
it has been listed does not
mean that the property is
for sale. There are only
two ways to verify the
status of a property.



**T-S-D-A
BOOT CAMP**
Dominick
Dominick Megna, MD
Cedars-Sinai Medical Center
5
RESIDENT



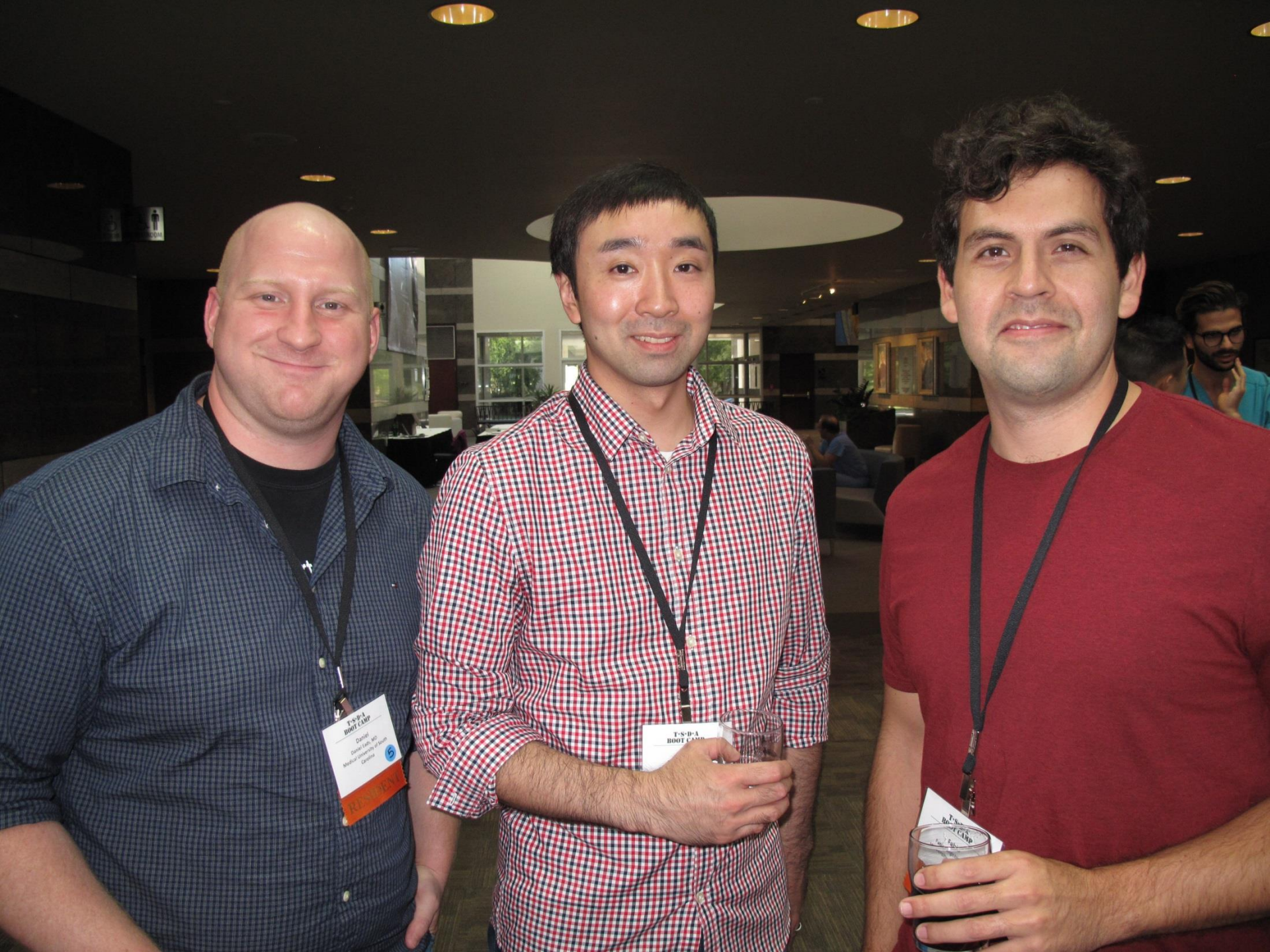


Man on the left: Pink polo shirt, khaki pants, smiling, wearing a lanyard and name tag.

Man on the right: Red polo shirt, blue jeans, wearing a lanyard and name tag, with a ring on his finger.

Table contents: A can of Sprite and a glass.





TSDA
BOOT CAMP
Daniel
Daniel Lam, MD
Medical University of South
Carolina

TSDA
BOOT CAMP

TSDA
BOOT CAMP

WINTERGREEN

← DOGWOOD
TRILLIUM



**T*S*D*A
BOOT CAMP**

September 17-20, 2015

Chapel Hill, NC